



# HYPACK® GEOPHYSICS

SOFTWARE FOR ACQUIRING AND PROCESSING SUB-BOTTOM, SIDE SCAN, AND MAGNETOMETER DATA

## BENEFITS

- Simple and cost-effective solution
- Can be upgraded to HYPACK® MAX
- On-call technical support provided by experienced and knowledgeable customer support team members

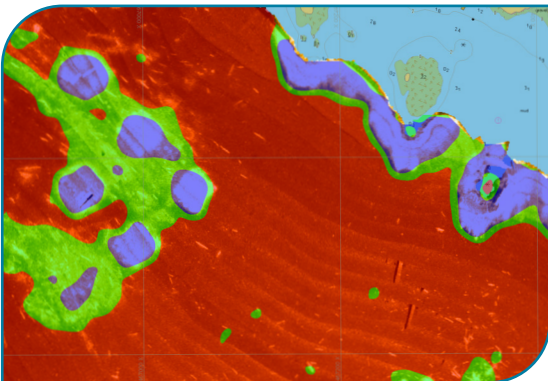
HYPACK® GEOPHYSICS supports the collection and processing of geophysical survey data. Three common geophysical survey devices are supported: Magnetometers, side scan sonars, and sub-bottom profilers. HYPACK® GEOPHYSICS enables collating and comparing data from these devices in one interface.

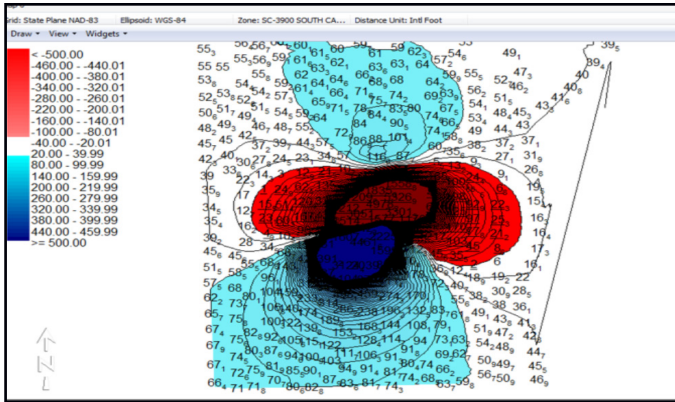
## FEATURES

- Survey planning and navigation support
- MAVLink, Seafloor, SeaRobotics, Spatialnetics
- Side Scan data collection, targeting, and mosaic tools
- Sub-Bottom collection and analysis tools to digitize layers
- Magnetometer support to collect, target, and create contours
- Multi-frequency display to see all frequencies once
- Overview display to see your entire file at once or jump to specific areas of interest quickly
- Modern gain algorithms

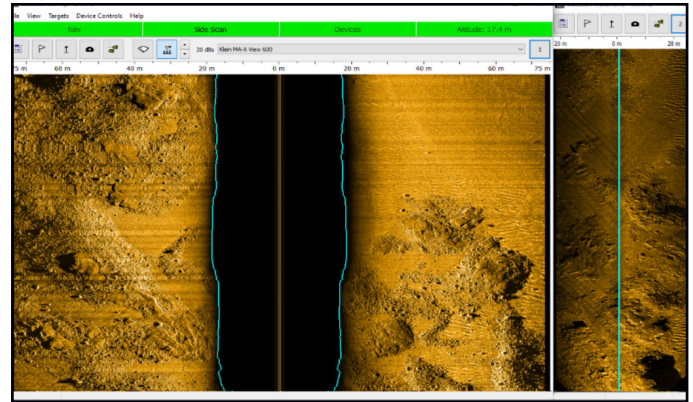
## SEGMENTATION SUPPORT

- Create contours using side scan or backscatter data

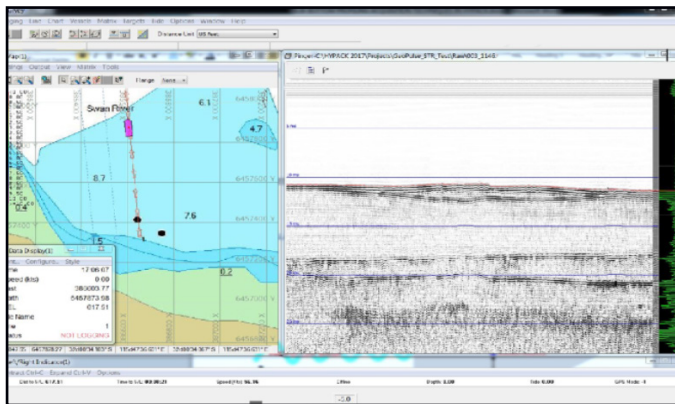




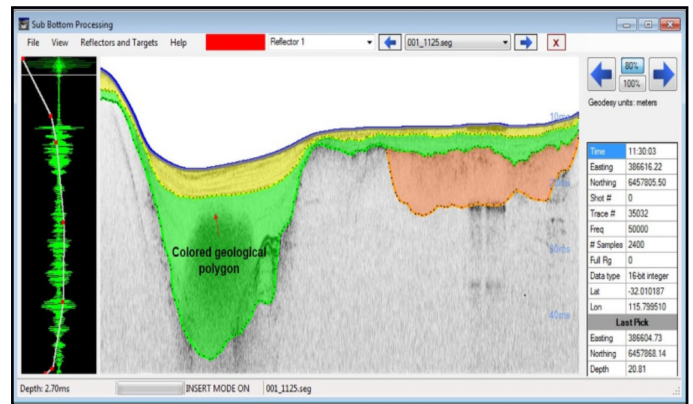
Dipolar target created in the Magnetometer Editing software displayed as a DXF Contour.



Collect data and map side scan data with the latest sensors on the market, including this data from the Klein MA-X View 600.



Navigation support includes both differential and RTK GPS units applies to all sensor options.



Processing Sub-Bottom data allows for the creation of geological polygons to visualize layers within the recorded data.

## HYPACK® GEOPHYSICS Specifications

Survey Planning	HYPACK® Shell, Web Map Server, Line Planning, Autonomous Mission Planning.
Geodesy	Support for over 100 pre-defined grids including UTM, State Plane, and many country-specific grids. Geodesy supports EPSG code search.
Position Support	GPS / GNSS / RTK / INS support, including Applanix, SBG, VectorNav, and many others.
Magnetometer Support	DF 1000, Gem Systems GSM-19, Gem Systems GSMP-35UC, Insight Dual Mag, IXSEA Magis, JW Fisher Proton ( 3,4,5 ), JW Fisher Pulse 12, Marine Magnetics SeaQuest ( 3/4 Channel ), Marine Magnetics SeaSPY Explorer, Marine Magnetics SeaSPY Gradiometer, OFG SCM Magnetometer, Quantro Sensing, Scintrex ENVI GRAD, SMM II, UC Magnetometer, Geometrics ( 881, 882, G-858, G-882 TVG, G-882TVG Mag and Transverse Gradiometer)
Side Scan Support	Benthos 162x, Benthos C3D, C-MAX CM2, EdgeTech ( 272-T/TD, 4100, 4125, 4200, 4205, 4300, 4600/6205 ), GeoAcoustics (Digital Side Scan, GeoSwath), Imagenex (878 RGB, AUV, SportScan, YellowFin), Innomar SES, Klein (3000, 3500 Deep, 3900, 4000, 4900, 4K-SVY, 5000, D3500TF, HydroScan 3500, UUV-3500 ), Kongsberg Pulsar, Marine Sonic (Sea Scan, Sea Scan ARC Explorer, Sea Scan HDS, SonarTech SonarBeam S-150, Tritech (SeaKing, StarFish 450/452, 990)
Sub-Bottom Support	EdgeTech 3000 Series, Falmouth HMX-6xx, Fugro 32 Bit Analog, Innomar SES-2000, Knudsen Pinger, Knudsen Chirp, Benthos SBP, Specialty Devices, SyQwest B2010/SB3510HD, SyQwest StrataBox, Teledyne Odom Chirp III.

HYPACK, a Xylem brand  
56 Bradley Street  
Middletown, CT 06457, USA  
+1.860.635.1500  
sales@hypack.com  
hypack.com

© 2025 Xylem Inc. or its affiliate. All rights reserved. HYPACK is a trademark of Xylem or one of its subsidiaries.

