

StarFish Sidescan Sonars

**Exceptional image quality in a
compact and rugged form factor
for single person deployment**



Changing the shape of the industry, the StarFish range offers towed, hull-mounted and OEM systems specifically designed for shallow water survey work. StarFish systems are available in 450kHz for increased range and 1MHz for improved resolution.

starfish

enquiries@blueprintsubsea.com
www.blueprintsubsea.com



Systems



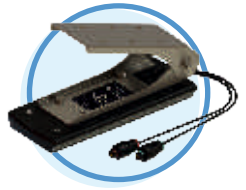
StarFish 452F PRO

450kHz CHIRP operation with up to a 200m swathe width, the towed StarFish is ideal for survey applications.



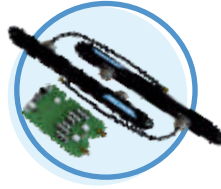
StarFish 990F XD

High definition 1MHz CHIRP operation, the towed StarFish is designed for survey and Search And Rescue applications.



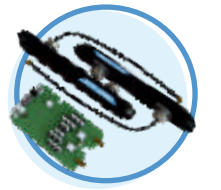
StarFish 992H Hull-Mount

1MHz CHIRP operation, hull mounted StarFish suitable for small inshore crafts.



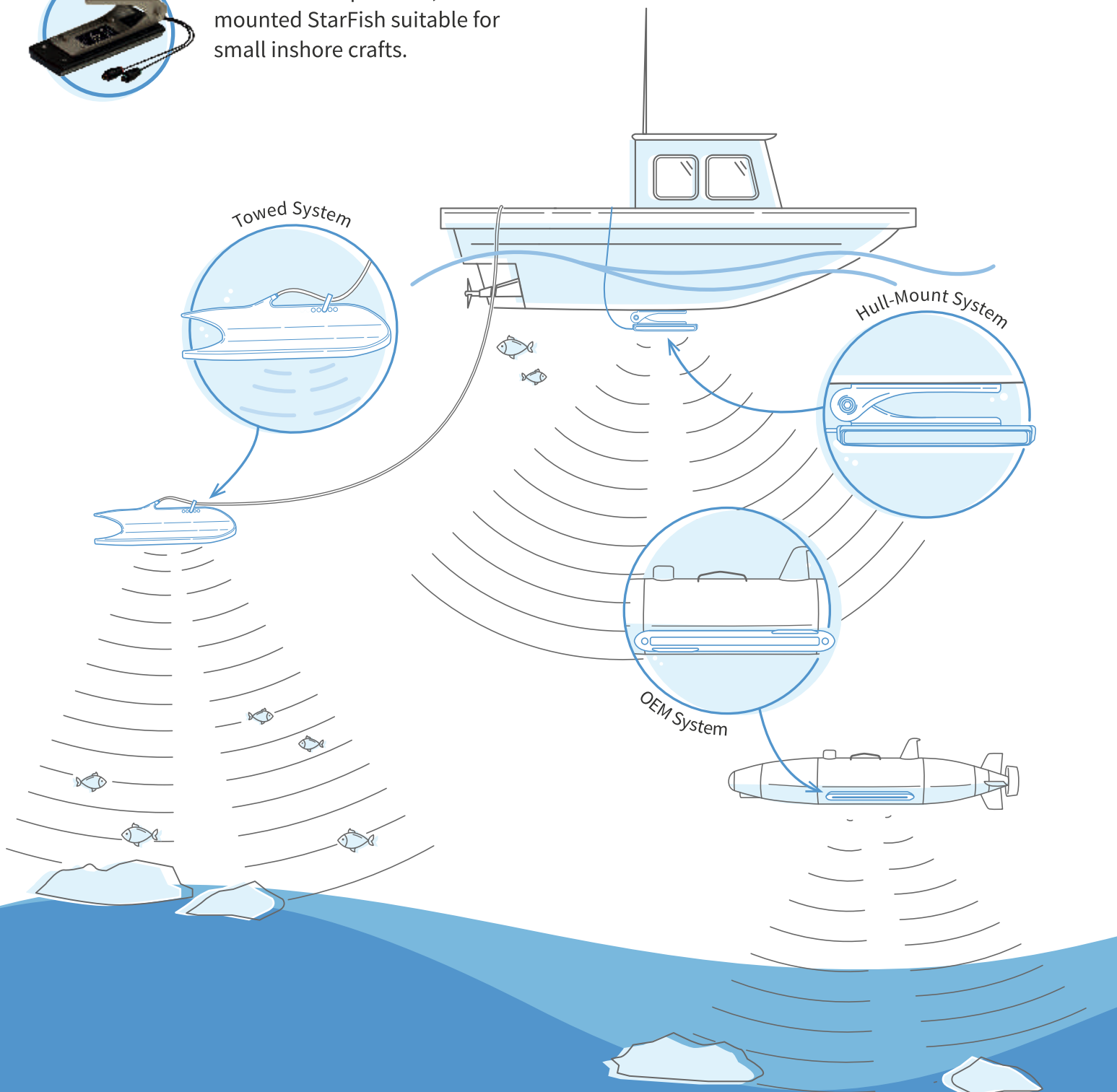
StarFish 454 OEM

450kHz CHIRP OEM system for ROV and AUV integration. Lower frequency for longer range.



StarFish 990 OEM

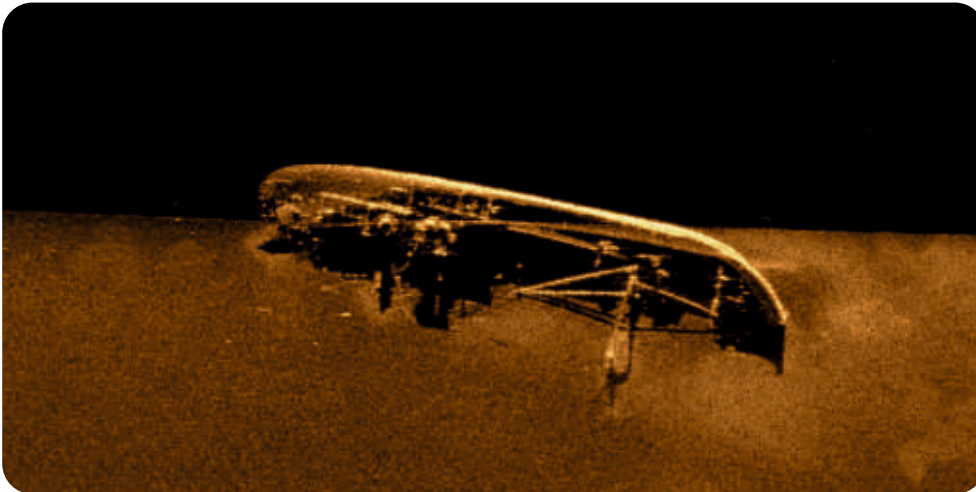
Higher frequency for higher resolution, 1MHz CHIRP system for ROV and AUV OEM integration.



Features

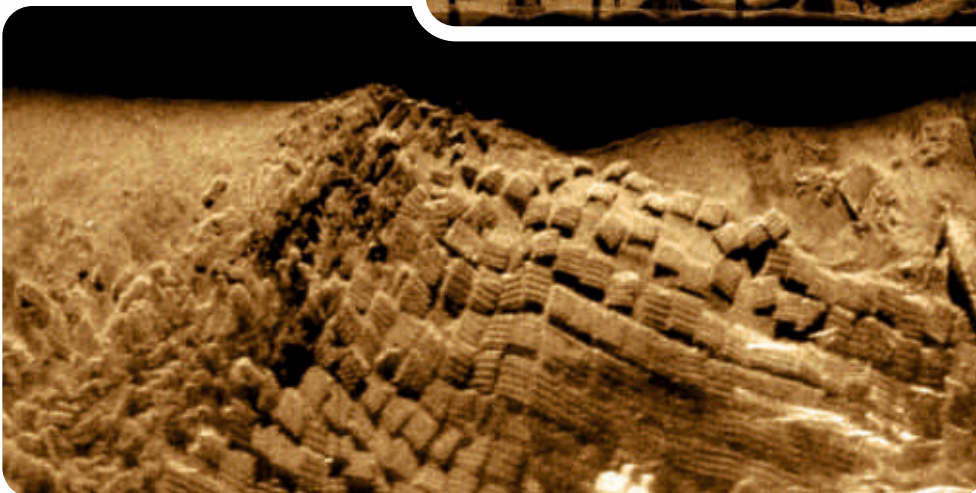
- Stable full-length tri-fin towed transducer design for improved imaging
- Lightweight and compact OEM transducer design for easy integration
- Operating frequencies from 450kHz to 1MHz utilising CHIRP technology
- Up to 200m swathe coverage
- Horizontal beam width as low as 0.3° for high resolution imagery and easier target identification
- Towed systems depth rated to 50m and OEM to 2000m
- Simple, intuitive operator software
- Single person deployable

Imagery

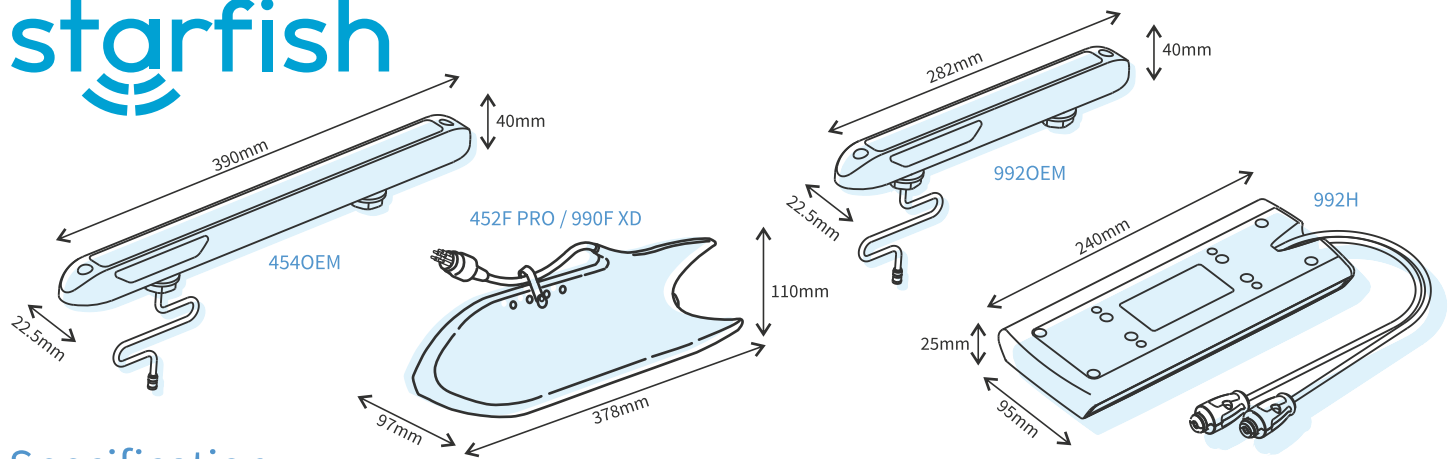


Steamship
452F 450kHz

Quayside Survey Composite
990F 1MHz



Concrete Mattress
452F 450kHz



Specification

Sonar	StarFish 452F PRO	StarFish 990F XD	StarFish 992H	StarFish 454OEM	StarFish 992OEM
Frequency	450kHz CHIRP	1 MHz CHIRP		450kHz CHIRP	1 MHz CHIRP
Operating Range	Up to 100m (328ft) per channel	Up to 35m (115ft) per Channel		Up to 100m (328ft) per Channel	Up to 35m (115ft) per Channel
Horizontal Beam Width	0.8°	0.3°		0.5°	0.3°
Vertical Beam Width	60°				
Transducer Angle	Tilted Down 30° from Horizontal			Variable (OEM Specified)	
Length x Width x Height	378mm x 97mm x 110mm		240mm x 95mm x 25mm	390mm x 23mm x 40mm	282mm x 23mm x 40mm
Weight (In Air)	2.0kg		0.7kg	0.8kg	0.7kg
Construction	PU Rubber		PU Rubber (Acetal Housing)	PU Rubber (PA6 Housing)	
Colour	High-Vis Yellow	High-Vis Red	Black		
Depth Rating	50m		2000m		
Connector	Impulse, 5-Way (MCIL-5-MP)		SMB Female Plug		
Supported Software Platforms	StarFish Scanline, Hypack 2009, SonarWiz.MAP / SonarWiz 5 (Chesapeake Technology), Qvester Tangent SWATHVIEW System and CleanSweep-Lite (Oceanic Imaging Consultants, Inc.). Windows SDK available for OEM integrators.				

Cable

Length	20m or 50m Tow Cable	5m Integrated Cable	600mm* Integrated Cable
Construction	Black PU Jacket With Internal Kevlar Reinforcing (Strain) Member	Coaxial Interference Shielded Cable	
Connector	Impulse, 5-Way (MCIL-5-FS) to Souriau, 6-Way (UTS)	SMB Female Plug	

Top-Box

Model	450	990	990 OEM	450 OEM / OEM PCB	990 OEM / OEM PCB
Supply Voltage	90/264VAC, 47-63Hz or 9-28VDC				
Power Consumption	6W (500mA @ 12VDC				
Power Interface	2.1mm DC Jack Socket		2.1mm DC Jack Socket/ 6-Way Pin Header		
PC Interface	USB 2.0 B-Type Connector		USB 2.0 B-Type Connector/ 6-Way Pin Header		
Sonar Interface	Souriau, 6-Way (UTS) Female Socket		SMB Male Jack		
Length x Width x Height	166mm x 106mm x 34mm				
Weight (In Air)	0.4kg				
Temp. Range	-5°C to +40°C				
IP Rating	IP50 (Protection Against Ingress of Dust, No Protection Against Liquids)			IP50 (if Top-Box selected)/ None	

Please note that all functions & specifications may be subject to change in line with our policy of continual product development.

*Length customisable as per customer requirements.

DA-103-P00231-08